

Webinar (Demo Session) on Data Visualization and Analysis using SigmaPlot 14.5

Organized by : Department of Chemical and Polymer Engineering along with Central Library Tripura University

Date : 8th Nov 2021

Time : 11am to 1pm

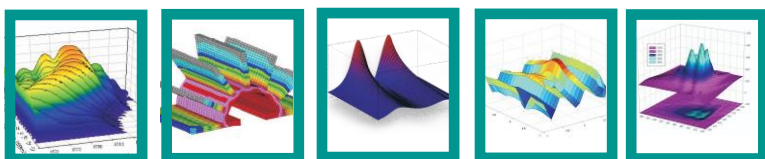
Meeting Link: <https://meet.google.com/fpo-qbtd-ixq>

"A globally acclaimed Statistical & Graphical software endorsed by the scientific & research community for over 30 years"

SigmaPlot® is a scientific data analysis and graphing software package with advanced curve fitting, a vector-based programming language, macro capability and over 50 frequently used statistical tests. SigmaPlot has the analytical features necessary to extract important information from your research data. With over 100 graph types and a user interface which allows detailed manipulation of every graph object, you can create the exact graph to present your results.

Topics to be Covered – Sigmaplot 14.5

- About Software : What is SigmaPlot?, Menu options, Advisor wizard, Features
- Data insert/import : How to enter Variable & data, Properties of variable & data, Supporting file formats
- Statistics : Frequency table, Normality test, Mean, Median, Mode, Linear Regression, Non-Linear regression, Hypothesis testing
- SigmaPlot 14.5 : Statistical Analysis Features, Statistical Graph Enhancement, Smoothers Enhancement, Import and export options and Licensing feature
- Question and Answers



Resource Person:
Kiran Bhandary, Statistical Analyst

Inpixon India Limited

6 E&F, 6th Floor, Vaishnavi's Cynosure, Gachibowli, Telangana 50032

Phone: +91 – 040 29803061, Email: saves.indiasales@inpixon.com.

website: <https://svstatsoftware.com/>